



**Mahatma Gandhi Antarrashtriya Hindi Vishwavidyalaya, Wardha**

Gandhi Hill, Wardha- 442001. (Maharashtra)

[Phone No. 07152 – 232669]

[Website : [www.hindivishwa.org](http://www.hindivishwa.org)]

**Tender No. MGAHV/CD/34/2019-20/06**

**Tender Notice**

Sealed tenders are invited for Construction of Dining Hall near new faculty girls hostel (Civil & Fabrication work). The tender should reach the University on or before 16.07.2019 up to 03:00 p.m.

The detailed terms and conditions of tender can be obtained from [www.hindivishwa.org](http://www.hindivishwa.org) and [www.eprocure.gov.in](http://www.eprocure.gov.in)

**Registrar**

# MAHATMA GANDHI ANTARRASHTRIYA HINDI VISHWAVIDYALAYA

Post Hindi Vishwavidyalaya, Gandhi Hills, Wardha-442 001.

(Phone 07152-232669 Fax No 07152-247602)

[Website : [www.hindivishwa.org](http://www.hindivishwa.org)]

Tender No. : MGAHV/CD/34/2019-20/06

Date : 01.07.2019

File No. : 34/2018-19/56 Nos.

## TENDER FOR CIVIL & FABRICATION WORK



TENDER FORM SALE WILL START FROM	:	10.00 AM on 01.07.2019
LAST DATE FOR SALE OF TENDER FORM	:	Upto 05.00 PM on 15.07.2019
LAST DATE FOR SUBMISSION OF TENDER FORM	:	Upto 03.00 PM on 16.07.2019
DATE OF OPENING OF TENDER (i.e. Technical Bid)	:	At 05.00 PM on 16.07.2019

- Tender available on [www.eprocure.gov.in](http://www.eprocure.gov.in) & [www.hindivishwa.org](http://www.hindivishwa.org)

TENDER FORM PRICE Rs. 500/-



# महात्मा गांधी अंतरराष्ट्रीय हिंदी विश्वविद्यालय, वर्धा

(संसद द्वारा पारित अधिनियम के अन्तर्गत स्थापित केन्द्रीय विश्वविद्यालय)

पोस्ट-हिंदी विश्वविद्यालय, गांधी हिल्स, वर्धा - 442001 (महाराष्ट्र),

(फोन-07152-232669 फैक्स-07152-247602)

वेबसाइट : www.hindivishwa.org

विश्वविद्यालय के दक्षिणी परिसर स्थित न्यू महिला छात्रावास के पास डायनिंग हॉल का निर्माण कार्य एवं पुराने साहित्य विद्यापीठ भवन के एक विंग में भोजन इत्यादि बनाने के लिए मरम्मत कार्य किया जाना है।

## (Technical Bid and other conditions)

1- कार्य का विवरण

- संलग्न

2- EMD राशि रु. 35,000/-

मांगपत्र- वित्ताधिकारी म.गां.अं.हिं.वि.वर्धा. महाराष्ट्र के नाम

3. जी.एस.टी. क्रमांक अनिवार्य। (प्रतिलिपि संलग्न करें)

4. आधार क्रमांक अनिवार्य (प्रतिलिपि संलग्न करें)

5. PAN क्रमांक अनिवार्य। (प्रतिलिपि संलग्न करें)

6. विगत तीन क्रमिक वर्षों का सिविल एवं फैब्रीकेशन कार्य कराने का अनुभव प्रमाण पत्र जमा कराना अनिवार्य। (जो कि प्रत्येक वित्तीय वर्ष में रुपया पन्द्रह लाख से कम न हो)

7. Technical & Financial bid अलग-अलग लिफाफे में जमा कराना अनिवार्य होगा।

8. निविदा भरने से पूर्व कार्यस्थल का निरीक्षण करना अपेक्षित है। किसी भी प्रकार की जानकारी/स्पष्टीकरण परिसर विकास विभाग कार्यालय से प्राप्त किया जा सकता है।

9. निविदा में दी गई दरें 06 (छः) माह तक वैध रहेंगी।

10. कायदेशि जारी होने के पश्चात 60 दिनों में कार्य पूर्ण करना होगा।

11. कार्य निर्धारित समयावधि में पूर्ण न होने की दशा में प्रतिदिन रु.1000/- (रुपया एक हजार मात्र) दण्ड स्वरूप वसूल किया जाएगा।

12. कार्य की गुणवत्ता की टेस्ट रिपोर्ट (कंक्रीट आदि) जमा करना आवश्यक होगा।

13. कार्य के दौरान उपयोग की जाने वाली बिजली का भुगतान निविदाकर्ता द्वारा मीटर रीडिंग के अनुसार किया जाएगा।

14. Performance Security (5% of Work Order Cost) जमा करना होगा।

15. उक्त निविदा में संपूर्ण सामग्री, श्रमिक व्यय एवं कर आदि सम्मिलित हैं।

16. श्रमिकों का बीमा होना अनिवार्य। (कायदेश प्राप्त के बाद परिसर विकास विभाग में प्रमाण पत्र प्रस्तुत करने के बाद ही कार्य प्रारम्भ करना होगा)
17. कार्य के दौरान यदि किसी प्रकार की दुर्घटना घटित होती है तो उसकी संपूर्ण जिम्मेदारी निविदाकारक की होगी।
18. कायदेश प्राप्त निविदाकर्ता को भारत सरकार/महाराष्ट्र सरकार के श्रम कानूनों, बाल मजदूरी कानूनों आदि नियमों का पालन करना अनिवार्य होगा।
19. कार्य के उपरान्त विश्वविद्यालय के अभियन्ताओं द्वारा संतोषजनक कार्य के प्रमाण पत्र के बाद ही भुगतान प्रक्रिया की जाएगी।
20. निविदा को कुलसचिव कार्यालय में रखे Tender Box में डालना होगा।
21. सभी अर्हताएँ निविदा जमा करने की तिथि को पूर्ण करना अनिवार्य है।
22. निविदा प्रपत्र प्राप्त करने हेतु 'वित्ताधिकारी, म.गां.अं.हिं.वि., वर्धा (महाराष्ट्र)' के नाम से देय रु. 500/- (रु. पांच सौ मात्र) का डिमांड ड्राफ्ट परिसर विकास विभाग में जमा कर निविदा प्रपत्र प्राप्त किया जा सकता है। यदि निविदाकारक द्वारा वेबसाइट से निविदा प्रपत्र डाउनलोड कर निविदा जमा की जाती है तो उक्त निविदा प्रपत्र के साथ 'वित्ताधिकारी, म.गां.अं.हिं.वि., वर्धा (महाराष्ट्र)' के नाम से देय रु. 500/- का डिमांड ड्राफ्ट जोड़ना अनिवार्य नहीं है।
23. तकनीकी निविदा में सफल निविदाकारक को ई-मेल/दूरभाष के माध्यम से सूचित किया जाएगा ताकि तकनीकी निविदा में सफल समस्त निविदाकारक 'वित्तीय निविदा' खुलने के समय उपस्थित रह सकें अतः सभी लिफाफों पर ईमेल ID व मोबाइल नम्बर अवश्य लिखें।
24. इस निविदा में किए जाने वाले किसी भी प्रकार के परिवर्तन की सूचनाएँ मात्र विश्वविद्यालय की वेबसाइट पर प्रकाशित की जाएँगी।
25. निविदा स्वीकार, अस्वीकार, निरस्त एवं विस्तारित करने का संपूर्ण अधिकार विश्वविद्यालय के पास सुरक्षित रहेगा।

**टेंडर भरने वाले का हस्ताक्षर एवं मुहर**

## **(Financial Bid)**

**Name of work :- Construction of Dining Hall Near New Faculty Girls Hostel at M.G.A.H. Wardha**

S.NO.	DESCRIPTION	UNIT	QTY.	RATE	AMOUNT
	<b>Civil Work</b>				
1	Earth work in surface excavation not exceeding 30 cm in depth but exceeding 1.5 m in width as well as 10 sqm on plan including disposal of excavated earth upto 50 m and lift upto 1.5 m, disposed soil to be leveled and neatly dressed : 2.1.1 All kinds of soil	sqm	160.00		
2	Earth work in excavation by mechanical means (Hydraulic excavator) / manual means in foundation trenches or drains (not exceeding 1.5 m in width or 10 sqm on plan), including dressing of sides and ramming of bottoms, lift upto 1.5 m, including getting out the excavated soil and disposal of surplus excavated soil as directed, within a lead of 50 m. 2.8.1 All kinds of soil.	cum	16.15		
3	Providing and laying in position cement concrete of specified grade excluding the cost of centering and shuttering - All work up to plinth level : 1:4:8 (1 Cement : 4 coarse sand : 8 graded stone aggregate 40 mm nominal size	cum	2.40		
4	Providing and laying in position machine batched and machine mixed design mix M-25 grade cement concrete for reinforced cement concrete work, using cement content as per approved design mix, including pumping of concrete to site of laying but excluding the cost of centering, shuttering, finishing and reinforcement, including admixtures in recommended proportions as per IS: 9103 to accelerate, retard setting of concrete, improve workability without impairing strength and durability as per direction of Engineer-in-charge. 5.33.1 All works upto plinth level 5.33.2 All works above plinth level upto floor V level	cum	32.80		

S.NO.	DESCRIPTION	UNIT	QTY.	RATE	AMOUNT
5	Brick work with non modular fly ash bricks conforming to IS:12894, class designation 10 average compressive strength in super structure above plinth level up to floor V level in : Cement mortar 1:4 (1 cement : 4 coarse sand	cum	13.20		
6	Filling available excavated earth (excluding rock) in trenches, plinth, sides of foundations etc. in layers not exceeding 20cm in depth, consolidating each deposited layer by ramming and watering, lead up to 50 m and lift upto 1.5 m	cum	67.50		
7	Steel reinforcement for R.C.C. work including straightening, cutting, bending, placing in position and binding all complete upto plinth level. 5.22.6 Thermo-Mechanically Treated bars	kg	1500.00		
8	Providing and fixing 18 mm thick gang saw cut, mirror polished, premoulded and prepolished, machine cut for kitchen platforms, vanity counters, window sills , facias and similar locations of required size, approved shade, colour and texture laid over 20 mm thick base cement mortar 1:4 (1 cement : 4 coarse sand), joints treated with white cement, mixed with matching pigment, epoxy touch ups, including rubbing, curing, moulding and polishing to edges to give high gloss finish etc. complete at all levels. 8.2.2 Granite of any colour and shade 8.2.2.1 Area of slab upto 0.50 sqm	sqm	10.00		
9	Steel work in built up tubular ( round, square or rectangular hollow tubes etc.) trusses etc., including cutting, hoisting, fixing in position and applying a priming coat of approved steel primer, including welding and bolted with special shaped washers etc. complete. 10.16.1 Hot finished welded type tubes	kg	4250.00		
10	Providing and fixing 6 mm thick Asbestos Cement semi corrugated sheet roofing of any size including galvanized iron J and L hook bolts, galvanized iron and bituminous G.I. washers, iron clamps and bolt and nuts and scaffolding etc. complete	sqm	360.00		
11	6 mm cement plaster of mix : 13.16.1 1:3 (1 cement : 3 fine sand)	sqm	210.80		
12	Providing and applying primer coat for wall surface. 13.37.1 New work (two or more coats)	sqm	880.00		
13	Providing and fixing heat resistance paint	sqm	880.00		

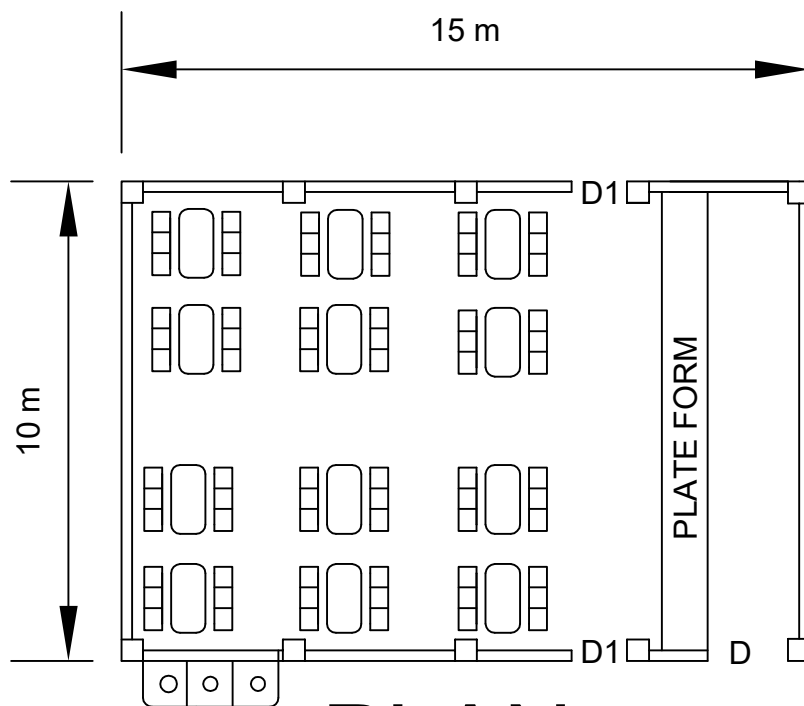
S.NO.	DESCRIPTION	UNIT	QTY.	RATE	AMOUNT
14	Providing and fixing 12 mm thick prelaminated particle board flat pressed three layer or graded wood particle board conforming to IS: 12823 Grade 1 Type II, in panelling fixed in aluminum doors, windows shutters and partition frames with C.P. brass / stainless steel screws etc. complete as per architectural drawings and directions of engineer-in-charge. 21.2.1 Pre-laminated particle board with decorative lamination on one side and balancing lamination on other side	sqm	11.20		
	<b>Plumbing work</b>				
1	Providing and fixing water tank	litre	10000.00		
2	White Vitreous China Angle back wash basin size 400 x 400 mm with single 15 mm C.P. brass pillar tap	no	2.00		
3	Providing and fixing Stainless Steel A ISI 304 (18/8) kitchen sink as per IS: 13983 with C.I. brackets and stainless steel plug 40 mm, including painting of fittings and brackets, cutting and making good the walls wherever required 470x420 mm bowl depth 178 mm	no	3.00		
4	Providing and fixing brass stop cock of approved quality 15 mm nominal bore	no	2.00		
5	Constructing masonry Chamber 60x60x75 cm inside, in brick work in cement mortar 1:4 (1 cement : 4 coarse sand) for sluice valve, with C.I. surface box 100mm top diameter, 160 mm bottom diameter and 180 mm deep ( inside) with chained lid and RCC top slab 1:2:4 mix (1 cement : 2 coarse sand : 4 graded stone aggregate 20mm nominal size ) , i/c necessary excavation, foundation concrete 1:5:10 (1 cement : 5 fine sand : 10 graded stone aggregate 40 mm nominal size) and inside plastering with cement mortar 1:3 (1 cement : 3 coarse sand) 12 mm thick, finished with a floating coat of neat cement complete as per standard design : 18.33.1 With common burnt clay F.P.S.(non modular) bricks of class designation 7.5	no	2.00		
6	UPVC pipe line	rmt	200.00		
7	HWR pipe line 6"/8"	rmt	50.00		
8	MS angle Water tank plate form 7' ht. (5000 litre )	no	2.00		
	<b>Electric Work</b>				
1	Supply and erecting regular/standard model Ceiling Fan of 1200mm. Sweep erected in position as per specification	Nos.	9.00		

S.NO.	DESCRIPTION	UNIT	QTY.	RATE	AMOUNT
2	Supplying and erecting ready to use T8 retrofit LED 18-20 W tube light with heat sink, integrated HF electronic driver and compatible to T8 (36W) luminary by removing starter and ballast if necessary.	Nos.	9.00		
3	Circuit/sub main wiring in PVC conduit : Wiring for circuit/sub main wiring alongwith earth wire with the following sizes of FR PVC insulated copper conductor, single core cable in surface/recessed medium class PVC conduit as required				
	2 x1.5 sq.mm. + 1 x1.5 sq.mm earth (light circuit wiring)	Rmt.	150.00		
4	Supply and erecting regular/standard model Ducting Cooler with ducting pipe & stand. Sweep erected in position as per specification & Engineer-In-Charge.	Nos.	2.00		
	<b>Miscellaneous work for old building</b>				
1	Providing and laying 60mm thick factory made cement concrete interlocking paver block of M -30 grade made by block making machine with strong vibratory compaction, of approved size, design & shape, laid in required colour and pattern over and including 50mm thick compacted bed of coarse sand, filling the joints with fine sand etc. all complete as per the direction of Engineer-in-charge	sqm	78.00		
2	Painting with synthetic enamel paint of approved brand and manufacture of required colour to give an even shade : 14.54.1 One or more coats on old work	sqm	283.00		
3	washing plate form size (1.2X1.2 m)	Nos.	1		
4	Providing and fixing Ist quality ceramic glazed wall tiles conforming to IS: 15622 (thickness to be specified by the manufacturer), of approved make, in all colours, shades except burgundy, bottle green, black of any size as approved by Engineer-in-Charge, in skirting, risers of steps and dados, over 12 mm thick bed of cement mortar 1:3 (1 cement : 3 coarse sand) and jointing with grey cement slurry @ 3.3kg per sqm, including pointing in white cement mixed with pigment of matching shade complete	sqm	60		

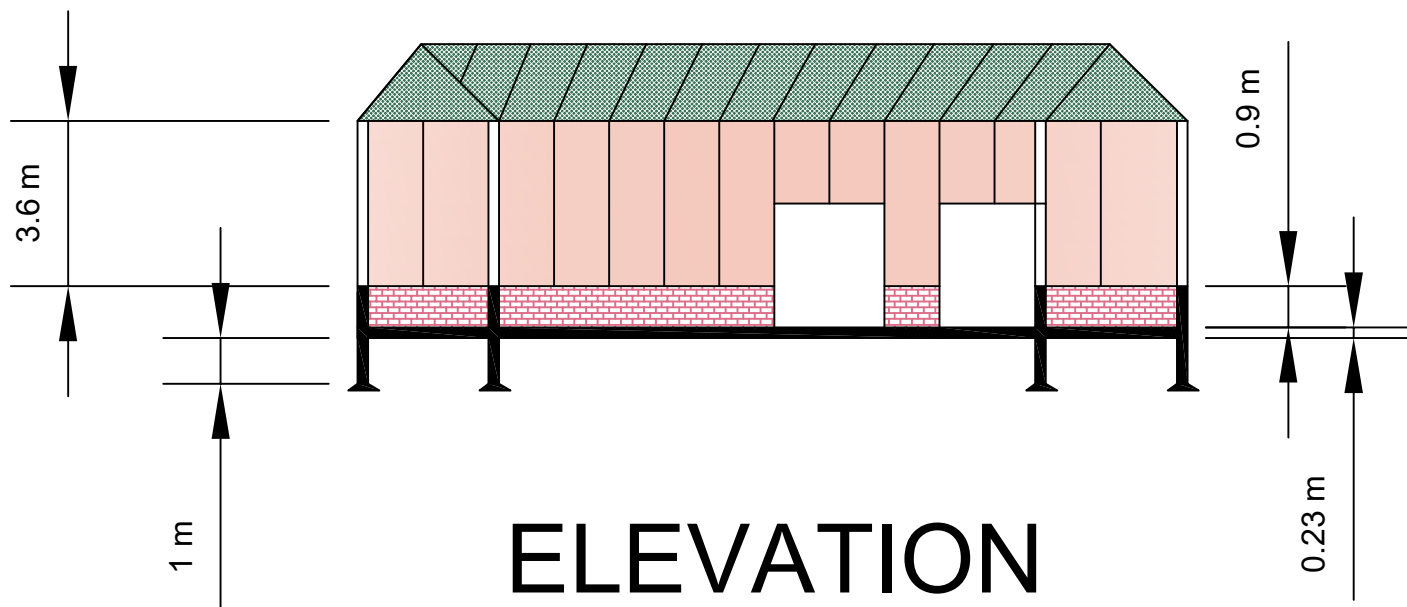


S.NO.	DESCRIPTION	UNIT	QTY.	RATE	AMOUNT
5	Providing and laying Ceramic glazed floor tiles of size 300x300 mm (thickness to be specified by the manufacturer) of 1st quality conforming to IS : 15622 of approved make in colours such as White, Ivory, Grey, Fume Red Brown, laid on 20 mm thick cement mortar 1:4 (1 Cement : 4 Coarse sand), including pointing the joints with white cement and matching pigment etc, complete. (toilet portion)	sqm	6.42		
6	Providing and fixing Ist quality ceramic glazed wall tiles conforming to IS: 15622 (thickness to be specified by the manufacturer), of approved make, in all colours, shades except burgundy, bottle green, black of any size as approved by Engineer-in-Charge, in skirting, risers of steps and dados, over 12 mm thick bed of cement mortar 1:3 (1 cement : 3 coarse sand) and jointing with grey cement slurry @ 3.3kg per sqm, including pointing in white cement mixed with pigment of matching shade complete	sqm	8.47		
7	Providing and fixing 18 mm thick gang saw cut, mirror polished, pre-moulded and pre-polished, machine cut for kitchen platforms, vanity counters, window sills, facias and similar locations of required size, approved shade, colour and texture laid over 20 mm thick base cement mortar 1:4 (1 cement : 4 coarse sand), joints treated with white cement, mixed with matching pigment, epoxy touch ups, including rubbing, curing, moulding and polishing to edges to give high gloss finish etc. complete at all levels. 8.2.2 Granite of any colour and shade 8.2.2.1 Area of slab upto 0.50 sqm	sqm	4		
8	Kota stone slab flooring over 20 mm (average) thick base laid over and jointed with grey cement slurry mixed with pigment to match the shade of the slab, including rubbing and polishing complete with base of cement mortar 1 : 4 (1 cement : 4 coarse sand) : 11.26.1 25 mm thick	sqm	50.5		
9	repairing of door	Nos.	6		
	<b>Total</b>				

Name of Firm/Proprietor  
Seal and Sign



PLAN



ELEVATION

