



Mahatma Gandhi Antarrashtriya Hindi Vishwavidyalaya, Wardha

Gandhi Hill, Wardha- 442001. (Maharashtra)

[Phone No. 07152 – 232669]

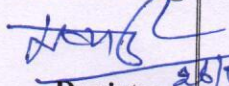
[Website : www.hindivishwa.org]

Tender No. MGAHV/CD/34/2019-20/02

Tender Notice

Sealed tenders are invited for renovation of Habib Tanvir Hall, Editing Room, Studio Room & Construction of Toilet Block and Painting work for Prathama Bhavan. The tender should reach the University on or before 21.05.2019 up to 05:00 p.m.

The detailed terms and conditions of tender can be obtained from www.hindivishwa.org and www.eprocure.gov.in


Registrar

26/04/19

MAHATMA GANDHI ANTARRASHTRIYA HINDI VISHWAVIDYALAYA

Post Hindi Vishwavidyalaya, Gandhi Hills, Wardha-442 001.

(Phone 07152-255686 Fax No 07152-247602)

[Website : www.hindivishwa.org]

Tender No. : MGAHV/CD/34/2019-20/02

Date : 26.04.2019

File No. : 34/2014-15/HTS/11

TENDER FOR RENOVATION OF HABIB TANVIR HALL, EDITING ROOM, STUDIO ROOM & CONSTRUCTION OF TOILET BLOCK & PAINTING WORK FOR PRATHAMA BHAVAN



TENDER FORM SALE WILL START FROM	:	10.00 AM on 30.04.2019
LAST DATE FOR SALE OF TENDER FORM	:	Upto 05.00 PM on 20.05.2019
LAST DATE FOR SUBMISSION OF TENDER FORM	:	Upto 05.00 PM on 21.05.2019
DATE OF OPENING OF TENDER (i.e. Technical Bid)	:	At 04.00 PM on 22.05.2019

- Tender available on www.eprocure.gov.in & www.hindivishwa.org

TENDER FORM PRICE Rs. 500/-



महात्मा गांधी अंतरराष्ट्रीय हिंदी विश्वविद्यालय, वर्धा

(संसद द्वारा पारित अधिनियम के अन्तर्गत स्थापित केन्द्रीय विश्वविद्यालय)

हिंदी विश्वविद्यालय, वर्धा - 442001 (महाराष्ट्र),

वेबसाइट : www.hindivishwa.org

विश्वविद्यालय के दक्षिणी परिसर स्थित हबीब तनवीर सभागार, एडीटिंग रूम, स्टुडिओ रूम का नवीनीकरण तथा प्रथमा भवन में टायलेट ब्लॉक का निर्माण एवं पेंटिंग कार्य किया जाना है।

1- कार्य का विवरण

- संलग्न

2- EMD राशि रु. 35,000/-

मांगपत्र- वित्ताधिकारी म.गां.अं.हिं.वि., वर्धा, महाराष्ट्र के नाम देय।

3. जी.एस.टी. क्रमांक अनिवार्य।

4. PAN क्रमांक अनिवार्य।

5. सिविल एवं आंतरिक कार्य कराने का अनुभव प्रमाण पत्र जमा कराना अनिवार्य।

6. Technical & Financial bid अलग-अलग लिफाफे में जमा कराना अनिवार्य होगा।

7. निविदा भरने से पूर्व कार्यस्थल का निरीक्षण करना अपेक्षित है। किसी भी प्रकार की जानकारी/स्पष्टीकरण परिसर विकास विभाग कार्यालय से प्राप्त की जा सकता है।

8. कायदेशि जारी होने के पश्चात 60 दिनों में कार्य पूर्ण करना होगा।

9. उक्त निविदा में संपूर्ण सामग्री, श्रमिक व्यय एवं कर आदि सम्मिलित हैं।

10. श्रमिक का बीमा होना अनिवार्य।

11. कार्य के दौरान यदि किसी प्रकार की दुर्घटना घटित होती है तो उसकी संपूर्ण जिम्मेदारी निविदाकारक की होगी।

12. कायदेशि प्राप्त निविदाकर्ता को भारत सरकार/महाराष्ट्र सरकार के श्रम कानूनों, बाल मजदूरी कानूनों आदि नियमों का पालन करना अनिवार्य होगा।

13. कार्य के उपरान्त विश्वविद्यालय के अभियन्ताओं द्वारा संतोषजनक कार्य के टिप्पणी के बाद ही भुगतान प्रक्रिया की जाएगी।

14. निविदा को कुलसचिव कार्यालय में रखे Tender Box में डालना होगा।

15. सभी अर्हताएँ निविदा जमा करने की तिथि को पूर्ण करना अनिवार्य है।

16. तकनीकी निविदा में सफल निविदाकारक को ई-मेल/दूरभाष के माध्यम से सूचित किया जाएगा। जिससे तकनीकी निविदा में सफल समस्त निविदाकारक 'वित्तीय निविदा' खुलने के समय उपस्थित रह सकें।

17. निविदा प्रपत्र प्राप्त करने हेतु 'वित्ताधिकारी, म.गां.अं.हिं.वि., वर्धा (महाराष्ट्र)' के नाम से देय रु. 500/- (रु. पांच सौ मात्र) का डिमांड ड्राफ्ट परिसर विकास विभाग में जमा कर निविदा प्रपत्र प्राप्त किया जा सकता है। यदि निविदाकारक द्वारा वेबसाइट से निविदा प्रपत्र डाउनलोड कर निविदा जमा की जाती है तो उक्त निविदा प्रपत्र के साथ 'वित्ताधिकारी, म.गां.अं.हिं.वि., वर्धा (महाराष्ट्र)' के नाम से देय रु. 500/- का डिमांड ड्राफ्ट जोड़ना अनिवार्य है।

18. निविदा स्वीकार, अस्वीकार, निरस्त एवं विस्तारित करने का संपूर्ण अधिकार विश्वविद्यालय के पास सुरक्षित रहेगा।

टेंडर भरने वाले का हस्ताक्षर एवं मुहर

Name of work : Renovation of Habib Tanvir Sabhagar, Editing Room, Studeo Room & Construction of Toilet Block and Painting work for Prathama Bhavan

ABSTRACT

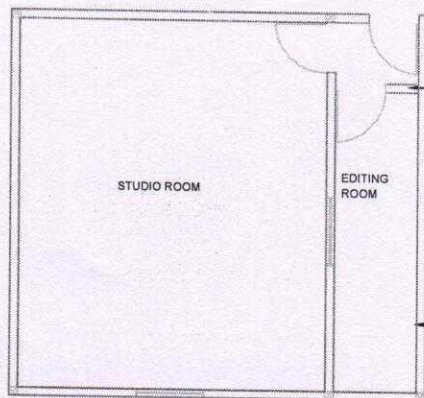
Sr. No.	Item Description	Unit	Qty	Rates	Amount
1	Removing rich mix cement concrete including stacking the spoils as directed with all leads, lifts etc. complete.	Cum	3.11		
2	Providing second class Burnt Brick masonry with conventional/ I.S. type bricks in cement mortar 1:6 in super structure including striking joints, racking out joints watering and scaffolding complete	Cum	3.00		
3	Providing and laying in situ, cement concrete M-15 of trap/granite/quartzite/gneiss metal for foundation and bedding including bailing out water, plywood/steel formwork, compacting, finishing uneven and honeycombed surface, curing etc. complete. The Cement Mortar 1:3 plaster is considered for rendering uneven and honeycombed surface only. Newly laid concrete shall be covered by gunny bag, plastic, tarpaulin etc. (Wooden centering will not be allowed.)	Cum	2.90		
4	Providing internal cement plaster 25 mm thick in single coat in cement mortar 1:4 to concrete, brick, stone surfaces in all positions including scaffolding and curing, providing groove at joint of B.B. Masonry and concrete members complete.	cum	115.04		
5	Providing and Laying ceramic tiles of approved quality , required size and 5 to 6 mm thickness for flooring in required position laid on bed of C.M.1:4 including cement float, filling joint with white / colour cement slurry, cleaning, curing, complete.	cum	115.00		
6	Providing and fixing ceramic tiles of approved quality , required size and 5 to 6 mm thickness for dado and skirting in required position with ready made adhesive mortar of approved quality in required position after making the wall portion in level in plaster of C.M. 1:4 including joint filling with white/colour cement slurry cleaning curing complete.	cum	26.67		
7	Providing and fixing glazed hermetically sealed glazing in aluminium door windows, ventilators and partition etc. with 6 mm thick clear float glass both side, having 12 mm air gap, including providing EPDM gasket, perforated aluminium spacers, desiccants, sealant (Both primary and secondary sealant) etc. as per specifications.	cum	18.48		

Sr. No.	Item Description	Unit	Qty	Rates	Amount
8	Providing and fixing on walls/ ceiling/floors, medium grade CPVC pipe having embossed ISI Mark on it, of required diameter with screwed sockets, joints, necessary fittings such as sockets, back nuts, elbows, bends, tees, reducers, enlargers, plugs, clamps etc. including necessary drilling holes in walls, slabs etc. and remaking good the demolished portion to restore the same in original condition neatly and providing and applying anticorrosive primer and two coats of oil painting, testing, etc. complete. 50 mm dia Make/Brand as per International standard	rmt.	79.00		
9	Providing and fixing 15 mm dia. Screw down bib cock of of required type including necessary sockets, union nut, testing etc. complete. Make/Brand as per International standard	Nos	6.00		
10	Bib cock Piller type Make/Brand as per International standard	Nos	5.00		
11	Providing and fixing stop cock of specified dia. including necessary sockets, union nut testing etc. complete. Make/Brand as per International standard	Nos	13.00		
12	Providing and fixing screw down required dia. wheeled stop tap of brass including necessary sockets, union nut, testing etc. complete. Make/Brand as per International standard	Nos	2.00		
13	Providing and fixing 100 mm dia. Chromium plated brass showers rose to 15 mm dia. Supply pipe including necessary bend and socket, testing etc. complete. Make/Brand as per International standard	Nos	6.00		
14	Providing and fixing European type earthenware W.C.PAN of required colour with UPVC seat and lid with chromium plated brass hinges and rubber buffers including UPVC and vent pipe upto the outside face of wall, pipe and stop tap brackets for fixing cistern 32 mm dia. UPVC flush pipe with fittings and clamps, 20 mm dia. UPVC overflow pipe, cutting and making good to the walls and floors, testing etc. complete. Make/Brand as per International standard	Nos	5.00		
15	Providing and fixing indian type earthenware W.C.PAN of required colour with cisten, including flush pipe, and stop tap brackets for fixing cistern 32 mm dia. UPVC flush pipe with fittings and clamps, 20 mm dia. UPVC overflow pipe, cutting and making good to the walls and floors, etc. complete. Make/Brand as per International standard	Nos	3.00		

Sr. No.	Item Description	Unit	Qty	Rates	Amount
16	Providing and fixing earthenware Wash Hand Basin of size 45 cm x 30 cm of required colour, brackets, stop tap, chromium plated bottle trap and necessary pipe connection including UPVC waste pipe and trap up to the out side face of the wall, making good the damaged surface, testing etc. complete. Make/Brand as per International standred	Nos	5		
17	Two way bib cock Make/Brand as per International standred	Nos	8		
18	Health Faucet Make/Brand as per International standred	Nos	5		
19	Mirror Make/Brand as per International standred	Nos	5		
20	Towel Real Make/Brand as per International standred	Nos	6		
21	Providing and fixing Rigid PVC. Nahani Trap of required size including P.V.C. grating, bend, connecting piece of UPVC pipe up to the outside face of the wall, making good the damaged surface, testing etc. complete. Make/Brand as per International standred	nos	19		
22	Providing and fixing UPVC SOIL / VENT / WASTE SWR pipe of required diameter conforming to I.S.13592, and I.S.-4985 to withstand continous internal hydroulic pressure of 4 kg/cm2 including necessary fixtures and fittings, such as bends, tees, single junctions, double junctions and joining with rubber rings and lubricants, on wall by means of clips or in ground including necessary excavation, laying refilling complete Make/Brand as per International standred	mtr	55		
23	Water Tank including all fitting Make/Brand as per International standred	Ltr.	4000		
24	Providing and applying with seal EXTERIOR cement Primer of approved manufacture and shade inincluding scaffolding preparing the surface by cleaning dirt and other foreign matters on MUD PLASTER scrapping if necessary including scaffolding etc. complate. Providing and applying exterior Premium emulsion water based paint of approved colour and shade to exterior old/new surface in 2-3 coats including scaffolding preparing the surface to receive paintetc. complete.	sqm.	577.5		

Sr. No.	Item Description	Unit	Qty	Rates	Amount
25	Providing and applying water Resistance/ touchup Putty wuth seal interior Cement primer/oil based Primer of approved manufacture and shade including scaffolding preparing the surface by cleaning dirt and other foreign matters on putting or punning surface. Providing and applying Interior emulsion water based paint of approved colour and shade to interior old/new surface in 2-3 coats including scaffolding preparing the surface to receive paint etc. Complete.	sqm.	525.6		
26	Providing and applying two or more coats of Synthetic enamel base oil paint of approved colour and shade to old wood work and fiber boards and steel work and iron work including scaffolding.	sqm.	35		
27	Providing Water proofing treatment to old terraces by removing existing treatment, sealing of cracks by non shrink crack fill compound applying first coat of polymer modified semi-viscous paste prepared by mixing polymer of approved make jotun/fosroc in Rohnex water proofing system in two coats(1kg powder,700 ml water and polymer jelly for first coat & 1 kg powder,500 ml water & polymer jelly for second coat) to a neatly cleaned and dust free concrete surface and upto 300 mm over parapet wall prepared by removing loose and deposited material with brush and water, followed by two coat of flexible cementious coating	sqm.	650		
28	Curtun rod with necessary fitting	Nos	20		
29	Window Jalli with MS angle frame	sqm.	38		
EDITING ROOM					
	Wall Paneling of Plain Gypsum Board				
1	Preparation of "wall paneling " with use of 12 mm thik acostic sheet in editing room	sq ft	180		
2	Providing and fixing plywood partion with door in editing room with laminate,all hardware fixtures,door closer lock etc complete	sq ft	42		
3	Providing and laying 1.5mm thick PVC plank on floor	sq ft	115		
4	Painting work of Editing Room Providing and applying acrylic emulsion paint on wall, false ceiling after	sq ft	500		

Sr. No.	Item Description	Unit	Qty	Rates	Amount
"STUDIO ROOM "					
1	Wall Paneling of Plain Gypsum Board Preparation of "wall paneling " with use of 12 mm thk gypsum board ht 1mtr with covering of approved design ,colour,shade wall paper on it Minor repairing of existing acoustic sheet with glasswool	sq ft	255		
2	Providing and fixing 15x15 mm teakwood beading on upper level of gypsum board and applying french polish on teak wood beading	rft	70		
3	Replacement of existing broken and damaged acoustic sheet on false ceiling	sqft	80		
4	Providing and fixing aluminium window with fixed glass	sqft	40		
5	Providing and fixing roller window blinds	sqft	120		
6	Providing and laying 1.5mm thick PVC plank on floor	sqft	360		
7	Painting work of STUDIO Hall	sqft	775		
"Tanveer Habib Hall"					
1	Wall Paneling of Ply and Cloth [Febric] Preparation of "wall paneling " with use of 12 mm thk commercial ply with covering of blazer/jute/velvet cloth on visible area of ply and providing and laying glasswool on upper level of door [ht;1'.6"] covered with blazer/jute/velvet cloth	sq.ft.	760		
2	Providing and fixing 2 track aluminium sliding window	sq.ft.	38		
3	Providing and fixing roller window blinds	sq.ft.	40		
4	Providing and laying 1.5mm thick PVC plank on floor	sq.ft.	970		
5	Providing and laying non oven carpet on stage	sq.ft.	425		
PART "A"					
6	Repairing of existing stage platform by removing entire non oven carpet and replacing old broken plywood with new ply & non oven carpet	sq.ft.	350		
7	Butification work of stage with ply,laminates,febric as per discussion with concern authority[3 side]	sq.ft.	200		
8	Painting work of hall	sq.ft.	2200		
9	Miscellaneous electrical work includes light,cabbling etc.complete	nos	20		



Studio & Editing Room

Plywood Partition
with Door

EDITING
ROOM

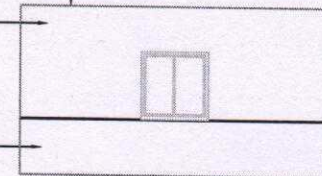
STUDIO ROOM

Acoustic Sheet Wall Paneling
on all wall with Painting

Plain Gypsum board paneling
with approved wallpaper.

Repairing of existing
acoustic sheet of wall

Repairing & Replacement of
damaged acoustic sheet
of False Ceiling.



15mm x 15mm
Teak wood
corner beading.

Studio Details

NOTE- Studio Room Details

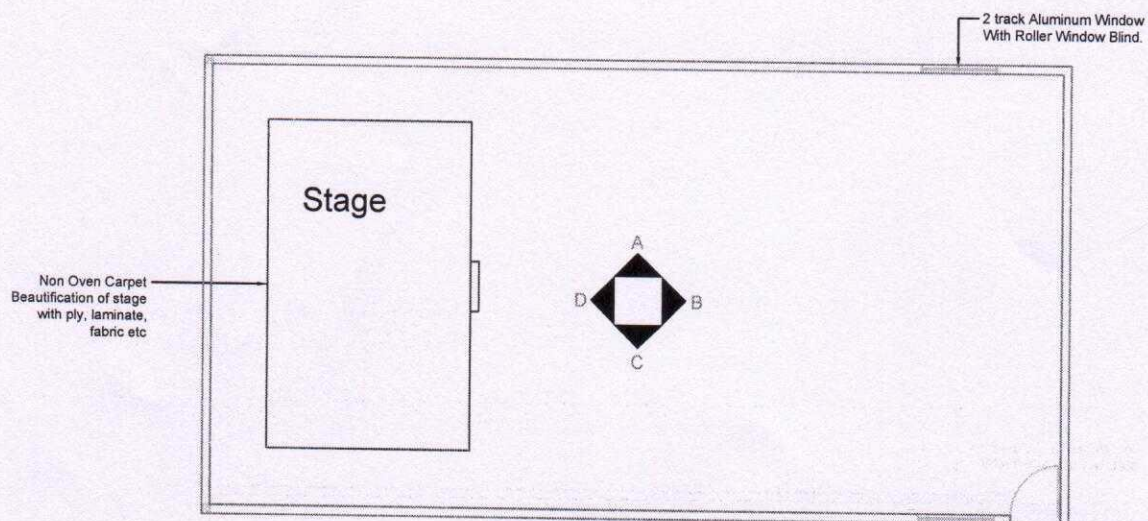
Plain Gypsum Board Paneling - 255sqft.
Teak Beading - 70 rft.
Replacement of existing ascoustic on false
ceiling - 80sqft.
Aluminum Window with Fixed Glass -
40sqft.
Roller Blind on all window - 120sqft.
1.5mm thick PVC plank on floor - 360sqft.
Painting Work of STUDIO hall - 775 sqft.

NOTE- Editing Room Details

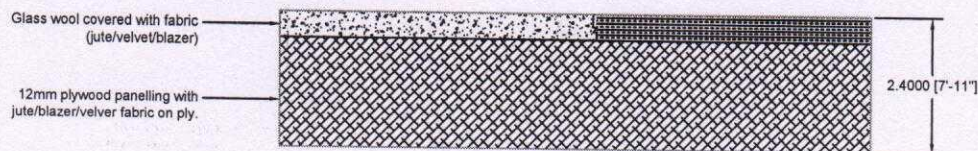
Ascoustic Sheet paneling - 180sqft.
Plywood partition with Door - 42sqft.
1.5mm thick PVC plan on floor - 115sqft.
Painting Work - Lumpsum.

STUDIO & EDITING ROOM

Work - Wall paneling, Partition etc & other various works.
Site - M.G.A.H.V , Wardha.



HABIB TANVEER HALL



Details of Paneling Work

NOTE-

Total area of paneling work on 3 wall
(A+B+C) - 760 sqft.
2 track aluminum window 2nos - 38sqft.
Roller Blind on window 2nos - 40sqft.
Providing PVC plank on floor - 970sqft.
Non oven carpet on stage - 425sqft.
Repairing of existing platform with
replacement of ply - 350sqft.

HABIB TANVEER HALL

Work - Wall paneling with ply, glass wool and fabrics.
Site - M.G.A.H.V , Wardha.

